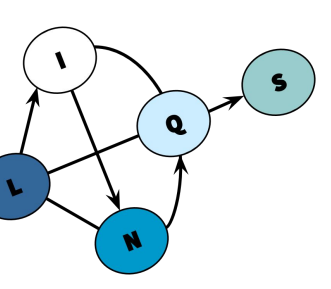




# A Comparison of Bottom-Up Approaches to Grounding for Templated Markov Random Fields



Eriq Augustine & Lise Getoor  
University of California, Santa Cruz

**Grounding**, the process of instantiating a templated Markov Random Field (MRF), is typically the limiting factor when modeling with MRFs. Here we investigate **three** key components in a MRF grounding system:

1. Inference Targets & Scoping
2. Trivial Potential Removal
3. Blocking

## Grounding Templated Markov Random Fields Data

### Rules

WritesAbout(A1, T) & WritesAbout(A2, T)  
=> SameAuthor(A1, A2)  
SimilarName(A1, A2) => SameAuthor(A1, A2)  
SameAuthor(A1, A2) & SameAuthor(A2, A3)  
=> SameAuthor(A1, A3)

### WritesAbout Data

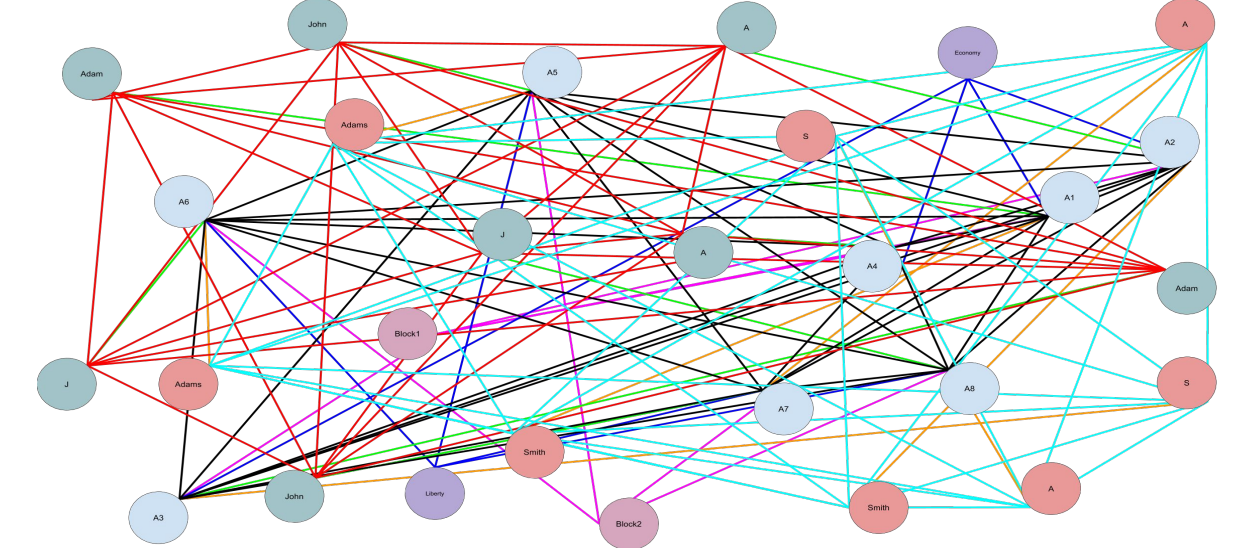
A Smith	Economy
Adam Smith	Economy
John Adams	Liberty
J Adams	Liberty

### Grounding

### Ground Rules

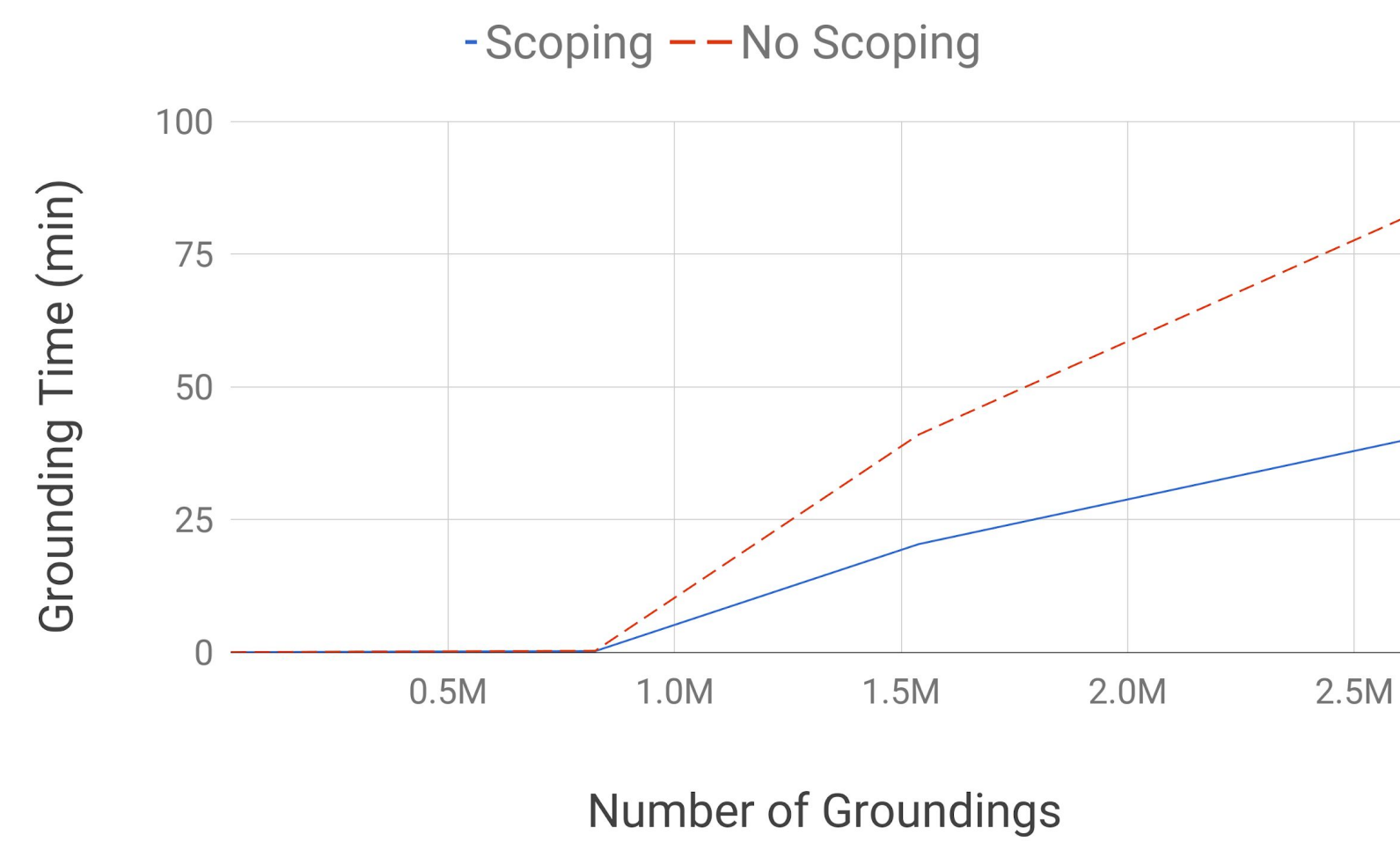
WritesAbout('A Smith', 'Economy') & WritesAbout('Adam Smith', 'Economy')  
=> SameAuthor('A Smith', 'Adam Smith')  
WritesAbout('Adam Smith', 'Economy') & WritesAbout('A Smith', 'Economy')  
=> SameAuthor('Adam Smith', 'A Smith')  
SameAuthor('A Smith', 'Adam Smith') & SameAuthor('Adam Smith', 'J Adams')  
=> SameAuthor('A Smith', 'J Adams')  
SameAuthor('John Adams', 'Adam Smith') & SameAuthor('Adam Smith', 'J Adams')  
=> SameAuthor('John Adams', 'J Adams')

### Ground Markov Random Field



## 1. Inference Targets & Scoping

WritesAbout(A1, T) & WritesAbout(A2, T)  
=> SameAuthor(A1, A2)



### Explicit Targets

#### SameAuthor

A Smith	Adam Smith
A Smith	J Adams
A Smith	John Adams
Adam Smith	J Adams
Adam Smith	John Adams
J Adams	John Adams

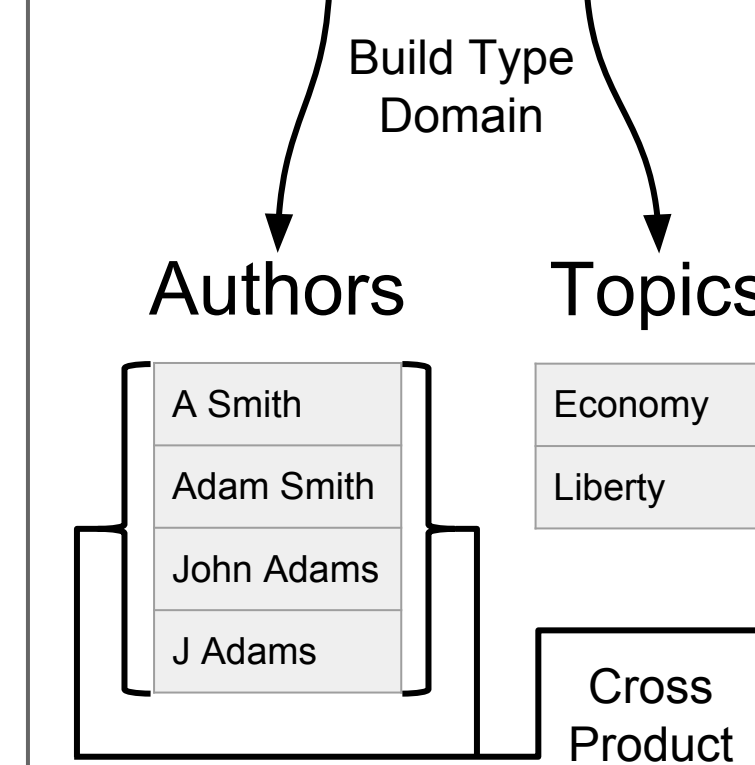
### Implicit Targets

#### WritesAbout

A Smith	Economy
Adam Smith	Economy
John Adams	Liberty
J Adams	Liberty

#### SameAuthor

A Smith	A Smith
A Smith	Adam Smith
A Smith	John Adams
A Smith	J Adams
Adam Smith	A Smith
Adam Smith	Adam Smith
Adam Smith	John Adams
Adam Smith	J Adams
John Adams	A Smith
John Adams	Adam Smith
John Adams	John Adams
John Adams	J Adams
J Adams	A Smith
J Adams	Adam Smith
J Adams	John Adams
J Adams	J Adams



### Implicit Targets With Scoping

SameAuthor(A1, A2) :=  
SameFirstInitial(A1, A2) & (A1 < A2)

#### SameFirstInitial

A Smith	Adam Smith
Adam Smith	A Smith
John Adams	J Adams
J Adams	John Adams

Evaluate A1 < A2

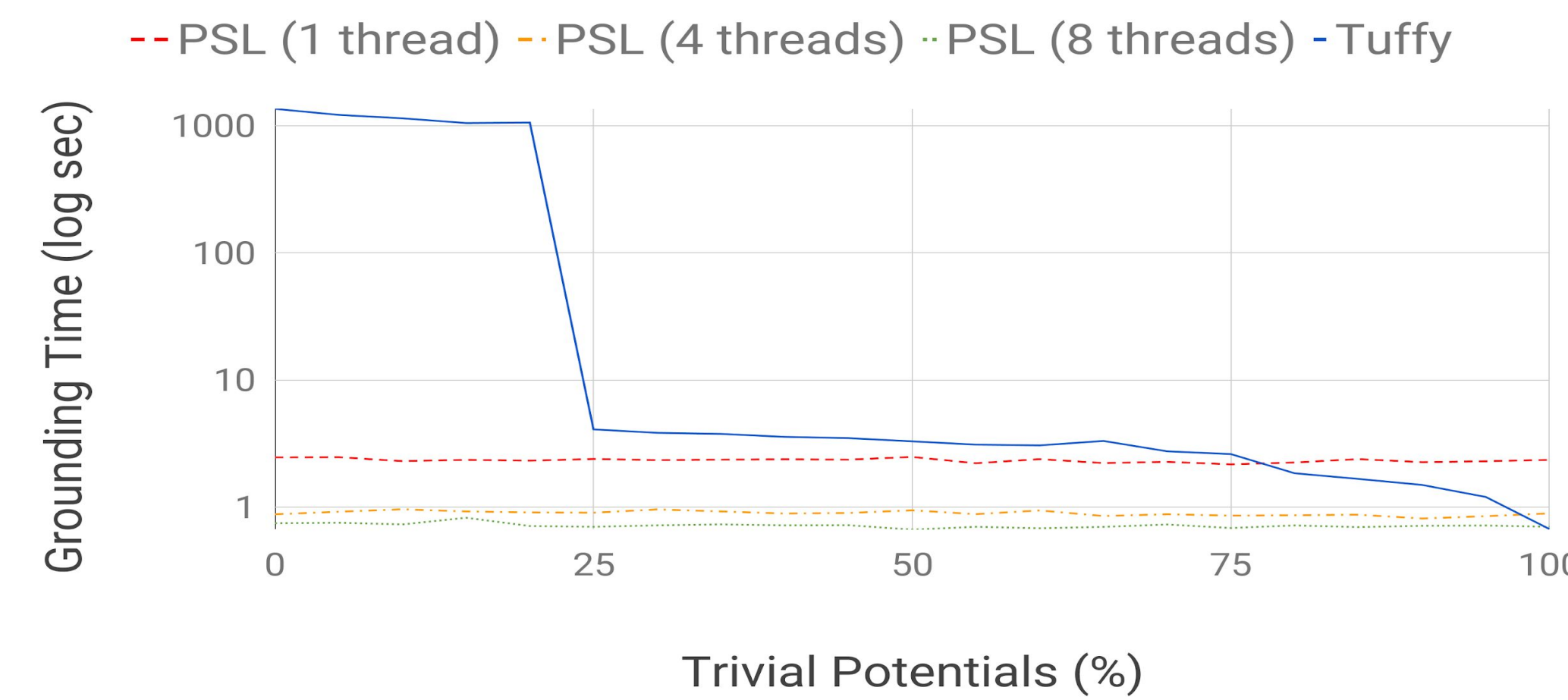
#### SameAuthor

A Smith	Adam Smith
J Adams	John Adams

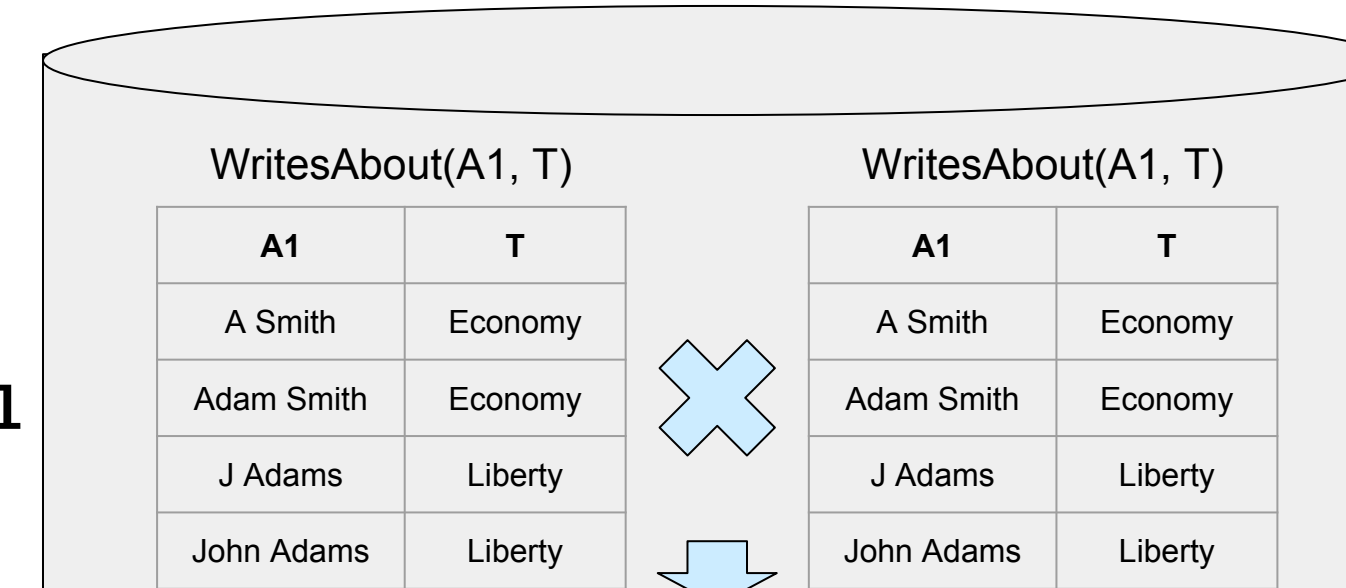
## 2. Trivial Potential Removal

WritesAbout(A1, T) & WritesAbout(A2, T) => SameAuthor(A1, A2)

!WritesAbout(A1, T) v !WritesAbout(A2, T) v SameAuthor(A1, A2)  
**False** v **False** v **True** = **Trivial**



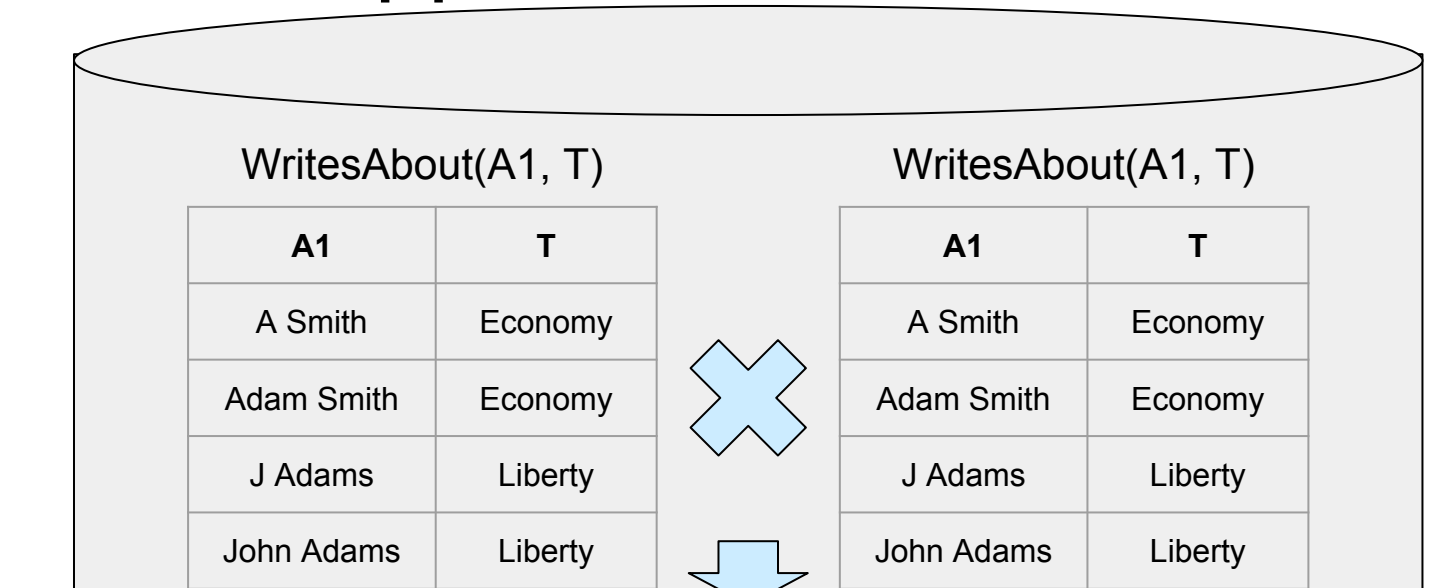
### Database Removal



WritesAbout('A Smith', 'Economy') & WritesAbout('Adam Smith', 'Economy')  
=> SameAuthor('A Smith', 'Adam Smith')  
WritesAbout('A Smith', 'Economy') & WritesAbout('John Adams', 'Economy')  
=> SameAuthor('A Smith', 'John Adams')  
WritesAbout('J Adams', 'Liberty') & WritesAbout('John Adams', 'Liberty')  
=> SameAuthor('J Adams', 'John Adams')  
WritesAbout('J Adams', 'Liberty') & WritesAbout('Adam Smith', 'Liberty')  
=> SameAuthor('J Adams', 'Adam Smith')

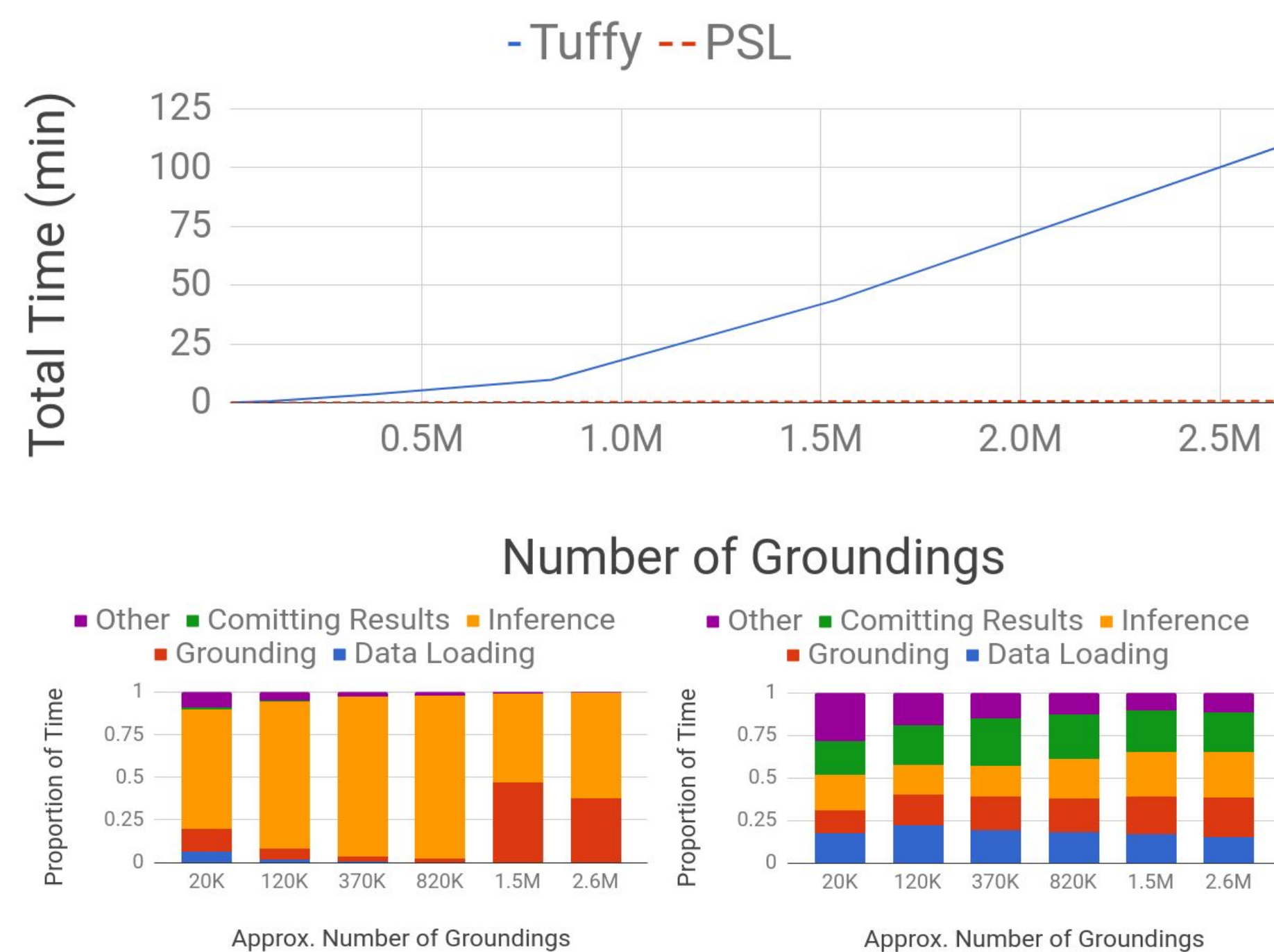
WritesAbout('A Smith', 'Economy') & WritesAbout('Adam Smith', 'Economy')  
=> SameAuthor('A Smith', 'Adam Smith')  
WritesAbout('J Adams', 'Liberty') & WritesAbout('John Adams', 'Liberty')  
=> SameAuthor('J Adams', 'John Adams')

### Application Removal



WritesAbout('A Smith', 'Economy') & WritesAbout('Adam Smith', 'Economy')  
=> SameAuthor('A Smith', 'Adam Smith')  
WritesAbout('J Adams', 'Liberty') & WritesAbout('John Adams', 'Liberty')  
=> SameAuthor('J Adams', 'John Adams')

## End to End Comparison



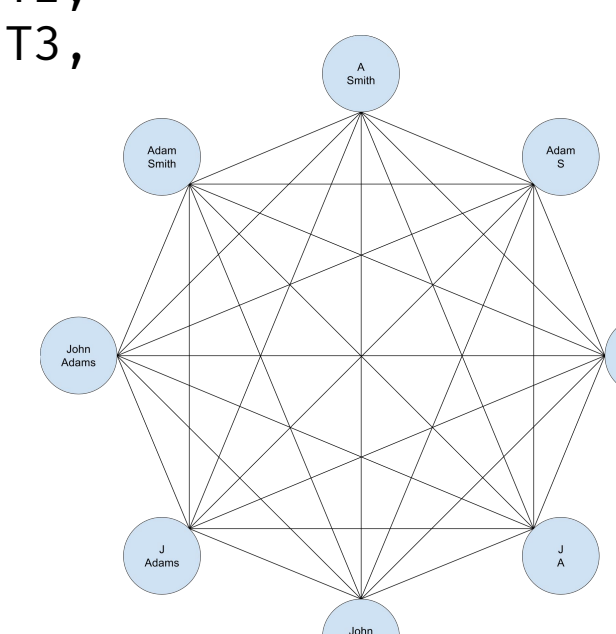
## 3. Blocking

### No Blocking

Rule: SameAuthor(A1, A2) & SameAuthor(A2, A3)  
=> SameAuthor(A1, A3)

Query: SELECT ... FROM SameAuthor T1, SameAuthor T2, SameAuthor T3, WHERE ...

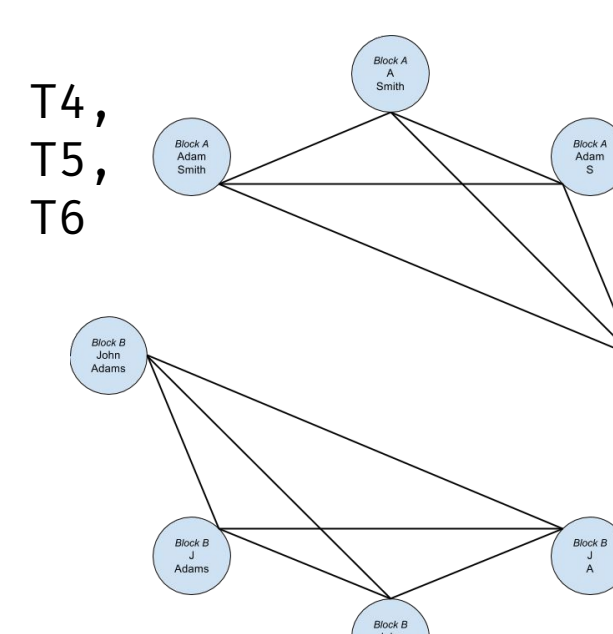
Result Graph



### Implicit Blocking

Rule: Block(A1, X) & Block(A2, X) & Block(A3, X) & SameAuthor(A1, A2) & SameAuthor(A2, A3)  
=> SameAuthor(A1, A3)

Query: SELECT ... FROM Block T1, Block T2, Block T3, SameAuthor T4, SameAuthor T5, SameAuthor T6, WHERE ...



### Explicit Blocking

Rule: Block(A1, X) & Block(A2, X) & Block(A3, X) & SameAuthor(A1, A2) & SameAuthor(A2, A3)  
=> SameAuthor(A1, A3)

Query: SELECT ... FROM Block T1, Block T2, Block T3, WHERE ...

